

Vocabulary Cards: My Pepeha

Te Reo Māori · Year 2



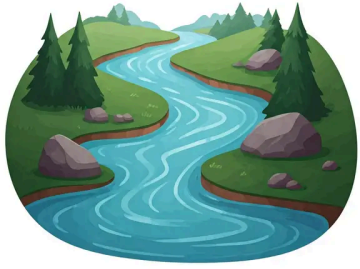
pepeha

A way of introducing yourself by saying your mountain, river, waka (canoe), iwi (tribe), and name. Example: Ko Tongariro tōku maunga, ko Waikato tōku awa, ko Te Arawa tōku iwi, ko Aroha tōku ingoa.



maunga

A mountain. Mountains are special places that show where we come from. Example: Ko Ruapehu tōku maunga.



awa

A river. Rivers give us water and food and are important to our whānau. Example: Ko Whanganui tōku awa.



waka

A canoe or large boat. Our tūpuna came to Aotearoa in a waka a very long time ago. Example: Ko Tainui tōku waka.



iwi

A tribe or large whānau group. People in an iwi share the same maunga and awa. Example: Ko Ngāpuhi tōku iwi.



ingoa

A name or word that belongs to you. Your ingoa is special and shows who you are. Example: Ko Hemi tōku ingoa.



tōku

Mine or my. We use tōku when we are talking about something that belongs to us. Example:

Ko Tongariro tōku maunga means Tongariro is my mountain.



ko

A kupu we use when we say what something is or who we are. Ko is the first kupu in a pepeha sentence. Example: Ko te kura tēnei means this is the school.